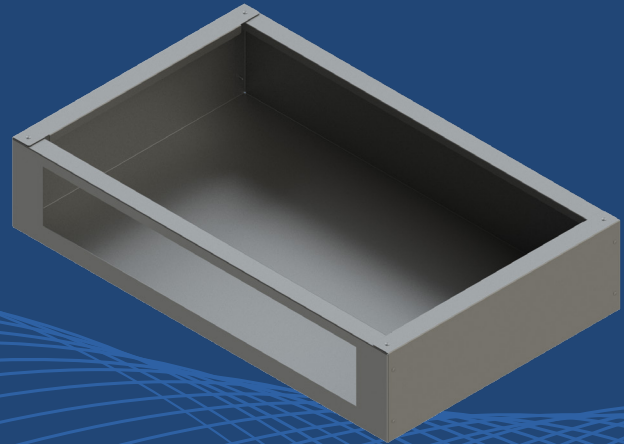


PERFORMANCE

Furnace Riser

Helps increase the effective area of filtration by expanding the air inlet opening into the furnace.



Maximizes Your Airflow

The Dust Free[®] Furnace Riser increases the total area of filtered airflow by lifting the furnace off the floor and allowing air to flow through both the bottom and side returns of the unit.

Dual Returns.

Lifts the furnace off the floor allowing airflow through both bottom and side returns.

MERV Expansion.

Designed to accommodate larger filter cabinets and allow for higher MERV ratings without sacrificing flow resistance.

Airflow Volume.

Increases the total area of filtered airflow into the system in vertical installations.

Pressure Drop.

Helps reduce pressure drop in the system.

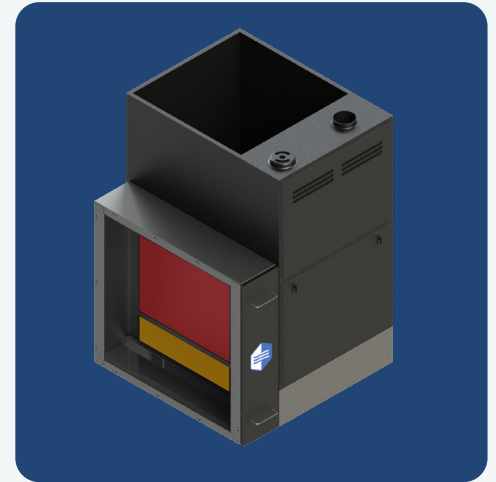
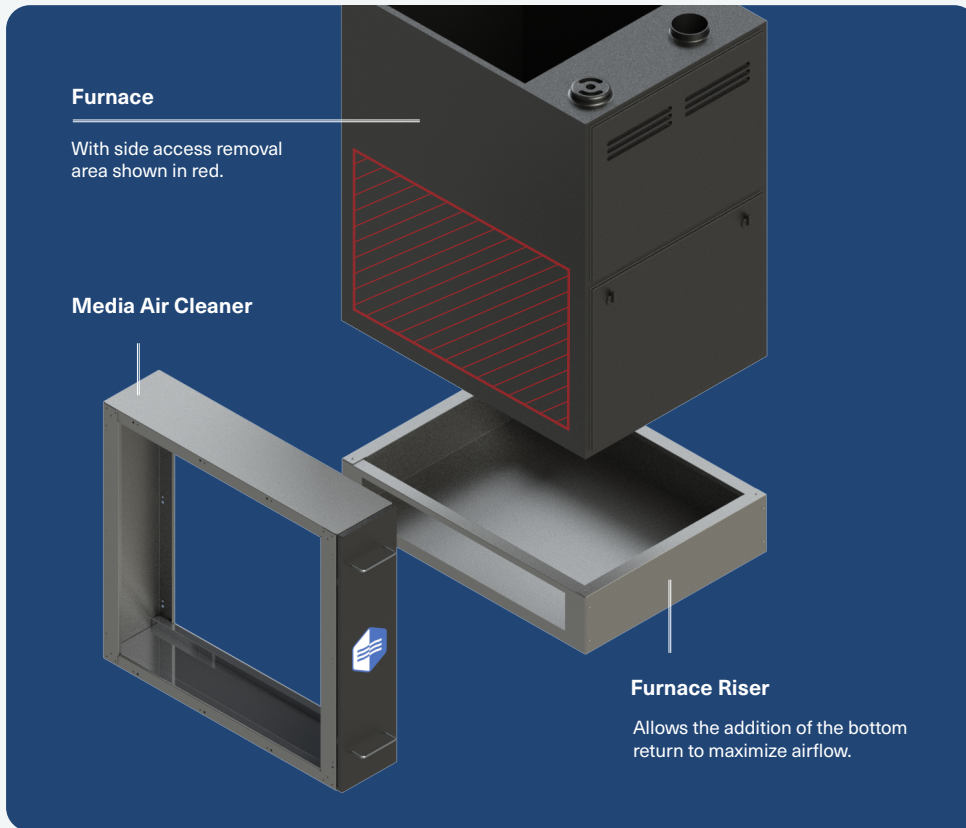
Construction.

Sturdy 22-gauge painted steel construction to support the weight of the furnace and other accessories.

Match Fit.

Available in four models to properly match furnace sizes.

IMAGES

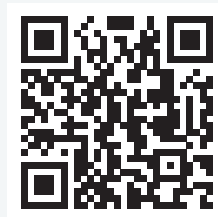


The Furnace Riser allows dual return airflow with side return shown in red and bottom return in yellow.

Exploded view of Furnace Riser and MAC in a furnace installation.

SPECIFICATIONS

Sizes (D x H x W)	#20070 - A-Width 14" x 5.83" x 28.25"	#20072 - C-Width 21" x 5.83" x 28.25"
	#20071 - B-Width 17.5" x 5.83" x 28.25"	#20073 - D-Width 24.5" x 5.83" x 28.25"
Construction	22-gauge painted steel.	



Learn more at
<https://dustfree.com>